

PLACEMENT BROCHURE

2021-22



**NATIONAL INSTITUTE OF TECHNOLOGY
MEGHALAYA**

Our Institute

The National Institute of Technology Meghalaya (NIT Meghalaya) is one among the thirty-one NITs in India established as an Institute of National Importance with full funding support from the Ministry of Human Resource Development, Government of India. NIT Meghalaya was established in the year 2010 and started functioning from its temporary campus in Shillong, Meghalaya in 2012. Its permanent campus is being set-up at Sohra (Cherrapunjee), Meghalaya which is endowed with pristine beauty and greenery. The campus will come up with state-of-the-art infrastructures and all the necessary modern amenities while maintaining harmony with the serene environment of Sohra. The aim of the Institute is to be a centre of excellence in education and research in the fields of engineering, science and technology.

Although relatively new, the Institute has imbibed in it the heritage, culture and pedagogy of the NITs (the erstwhile Regional Engineering Colleges, RECs) set up with the objective to impart education in the field of engineering, technology and science. The Institute is closely supported in its formative years by the Board of Governors consisting of eminent scholars, academicians and other prominent personalities who have served as Vice-Chancellors and heads of the institutes in various Universities/ Institutes/Centres of Excellence.

The Institute currently offers B.Tech. programme in five disciplines, M.Tech in five specializations, M.Sc. in three streams and Ph.D. programme in the various disciplines of Engineering, Science and Humanities. The Institute prides itself in providing the best possible environment for learning and research and strives to imbibe the spirit of creativity and entrepreneurship in its students.

Message from Director

From being one of the newly established NITs in the year 2010, the National Institute of Technology Meghalaya has become one of the preferred destinations for aspiring technology graduates of the country. Since the start of its functioning in Shillong, the efforts of the Institute have been to setup the best possible facilities with the constraints of a temporary campus. The institute has been able to put in place the necessary infrastructure and engage a pool of experienced, talented and dedicated faculty members to guide and train the students. The endeavours have been given due recognition by the National Institutional Ranking Framework (NIRF), 2020, which ranked the Institute 61st among the engineering institutions in the country. It gives me immense pleasure to inform you that while topping all the new NITs, the Institute stands at 14th among all the NITs of the country, and 2nd among the North East NITs.

The Institute currently offers B.Tech programme in the five disciplines of CSE, ECE, EE, CE and ME, M.Tech in five specializations in the above mentioned disciplines, M.Sc. in the three streams of Physics, Chemistry, Maths and Ph.D programme in the various specifications of Engineering, Basic Sciences and Humanities. The outgoing students have undergone rigorous training by the well qualified and motivated faculty members based on curricula developed with significant inputs from the industry. The curricula give equal weightage to theory and practice. The students have also been exposed to industrial training as well as research oriented projects to give them the desired confidence and the outlook for innovation.

This brochure presents an overview of the departments and the programmes offered; the infrastructures and facilities available; the past placement records and recruiters of the institute. It is worth mentioning here that amid the prevailing testing times post the outbreak of COVID-19, we are well prepared for conducting the placement related activities of the students through online modes ensuring adherence to the safety norms. We have upgraded the facilities for remotely conducting the test, facilitating interviews through a number of platforms on AV modes. I welcome you to visit us and invite you to hire our students. I am confident that our students will be able to significantly contribute to the growth of your esteemed organization with their stellar performance and prove to be indispensable assets.

Message from Head, Centre for Career Development

Over a span of one decade since its inception in 2010, NIT Meghalaya has firmly established itself as a premier institute of repute and centre of excellence in the fields of engineering and scientific research. Concerted efforts and outstanding contributions of faculties, students and administrative staffs have made it possible to achieve this feat. The right mix of young dynamic and experienced proficient faculty members are diligently working with great enthusiasm towards achieving the mission and vision of the institute. The faculty members have not only displayed distinctive pedagogical skills, but have also been actively involved in research, consultancy and other developmental activities.

With renewed focus on outcome based education, the program curriculum are designed innovatively and updated regularly to meet the needs of the rapidly changing industrial sectors and socio-economic scenario. While all the UG/PG programs are quite rigorous, students are offered to choose variety of electives to cater to their specific interest. Our students have also excelled in myriad facets of co-curricular activities beyond mainstream academics exhibiting superior skills and potential. The unique blend of academics, co-curricular activities helps to bring out the best in the students enabling them to become industry ready, competent to meet industry's expectation and foster innovation.

In an effort to bridge the gap between academia and industry, the institute promotes industry academia interface to acquaint the students with latest industry trends and emerging cutting-edge technologies. The Centre for Career Development facilitates students in undergoing employability skill training program in the institute along with internship programs in various organisations of repute to widen their exposure and knowledge domain. Frequent industrial visits and involvement in industry relevant projects exposes the students to real world challenges and offers opportunities to utilise their academic knowledge and demonstrate their problem solving skills. We have excellent infrastructure and well equipped with requisite state-of-the art amenities to conduct campus placement activities, viz. parallel interview sessions, pre-placement talks, group discussions etc. In view of the challenges imposed by the pandemic we have also revamped our e-hiring platforms to experience seamless online-recruitment process.

We cordially invite your esteemed organization to visit our institute and participate in the recruitment process through the modes of your convenience. We are extremely thankful for your unflinching support and reposing confidence in our graduates over the years which bear testimony to the competence of our students. We look forward to a long standing mutually beneficial association with our valued recruiters.

The Vision

A Centre of Excellence vibrant with academic activities and bubbling with youthful creative energy, making significant contribution to the World of Knowledge and Technology and to the Development of the State, the Region and the Nation.

TheMission

- To impart quality education in the fields of Engineering, Science and Technology at Undergraduate as well as Postgraduate levels with special attention to encourage innovation and creativity in these fields in a clean and healthy environment.
- To engage in creation of knowledge and development of technologies through effective research programs

GUIDING PRINCIPLES

- Every entity deserves respect; responsiveness, fairness and transparency are keys to it.
- Role of an academic institution is to enable unhindered exchange of knowledge.
- True education promotes the spirit of enquiry.
- Nurturing of talent and promotion of creativity must for achieving excellence.
- Learning is a lifelong process.
- Examination and evaluation processes are tools to enable better learning, not the ends.
- Every effort should be made to take the benefit of science and technology to the poor and underprivileged.
- Rural development is must for balanced development of the nation.
- Protection of the environment must get priority.

Table of Contents

Academic Programmes	7
Admission Procedure	8
Departments	9
Academic Demographics	14
Central Facilities	16
Student Life	18
Centre for Career Development	19
Centre for Career Development Infrastructure	19
Student Upskilling Programs	20
Placement Procedure	20
Placement Policy	21
Placement Record	22
Internship	24
Our Recruiters	26
The Team	27
Advantage of NIT Meghalaya	28
Location	29
How to Reach NIT Meghalaya	30
Places to Visit	31

ACADEMIC PROGRAMMES

Bachelor of Technology (B.Tech.)

- Computer Science and Engineering (CSE)
- Electronics and Communication Engineering (ECE)
- Electrical Engineering (EE)
- Mechanical Engineering (ME)
- Civil Engineering (CE)

Master of Technology (M.Tech.)

- Computer Science and Engineering (CSE)
- Electronics and Communication Engineering (ECE)
- Electrical Engineering (EE)
- Mechanical Engineering (ME)
- Civil Engineering (CE)

Master of Science (M.Sc.)

- Physics
- Chemistry
- Mathematics

Doctor of Philosophy (PhD) in the various specializations of

- Engineering
- Basic Sciences
- Humanities & Social Sciences

ADMISSION PROCEDURE

B.Tech.

As in the other NITs, NIT Meghalaya too attracts the cream of the students passing out of schools to its B.Tech. programme. They are admitted through the Joint Seat Allocation Authority (JoSAA) set up by MHRD, GoI after being screened through JEE (Main) conducted by Central Board of Secondary Education (CBSE), New Delhi.

M.Tech.

Admissions into the M.Tech. programmes are on the basis of the rank obtained in the Graduate Aptitude Test in Engineering (GATE) and through The Centralized Counseling for M.Tech/M.Arch/M.Plan (CCMT).

M.Sc.

Admissions into the M.Sc. programmes are through the Joint Admission Test for M.Sc. (JAM) and through the Centralized Counseling for M.Sc. /M.Sc. (Tech) (CCMN).

Ph. D

Through written test and interview conducted by the Institute and the decision of the Research Committee (RC) of the Institute.

Department of Computer Science and Engineering (CSE)

The Department of Computer Science & Engineering, NIT Meghalaya offers B. Tech degree in Computer Science and Engineering discipline. This U.G Programme in Computer Science and Engineering is perhaps the most popular Programme in NIT Meghalaya, with an average intake of 30 students per year. The department has adequate facilities to support these teaching activities. It has a well qualified and experienced faculty team. The Computer Science and Engineering department makes all efforts in imparting high quality education to its highly motivated students. One of the aims of this department to play its role of producing Computer Engineers ready to satisfy the needs of the Computer and IT world. The Department is also actively involved in various Research activities. The department also started its Mtech program from 2014 with an initial intake of 20. There is also a PhD programme under which research scholars are admitted twice a year.

Department of Electronics & Communication Engineering (ECE)

The Department of Electronics and Communication Engineering (ECE) was established in 2010 with the inception of National Institute of Technology Meghalaya. The department offers B.Tech. Programme with an intake capacity of 30 and M.Tech. Programme with an intake capacity of 20 in Electronics and Communication Engineering and Ph.D. program in various specialized areas of Electronics and Communication Engineering. The major research areas of the department include High Speed and Low Power VLSI, Computer Arithmetic, Wireless Sensor Networks, Cognitive Radio, Antenna Design and Signal Processing. The major objective of the department is to impart high quality technical education and research with a strong foundation in Electronics and Communication Engineering. The major areas of faculty expertise of the department include VLSI Systems, High Performance Computing, Signal Processing, Digital Signal Processing, Communication and RF & Microwaves Engineering.

Department of Electrical Engineering (EE)

The Department of Electrical Engineering started since the inception of NIT Meghalaya. Presently the department offers B.Tech, M.Tech and PhD Programs. The B. Tech program started in 2010 with an intake of 30 students at NIT Surat and since 2014 onward M.Tech program has been started with an intake of 20 students offering specialization in Power & Energy Systems. Presently there are full time and part time research scholars, registered for the PhD program in diverse specializations. The Department aims to impart high quality education to the students and carry out fundamental and industry oriented research work. The research interest of faculties encompass various areas of electrical engineering such as Power system Control, Smart Grid Technology, Synchrophasor Technology, Power Quality and Renewable energy integration to grid, Power Electronics & Drives, Control System and Instrumentation, Signal Processing and Biomedical Instrumentation, High Voltage Engineering etc. The department have well-equipped laboratory facilities to the students such as Basic Electrical Engineering Lab, Electrical Machine Lab, Network and Systems Lab, Digital Electronics Lab, Power System Lab, Computational Lab, Control & Instrumentation Lab, Power Electronics Lab, Electric Drives Lab, Microprocessor Lab, Microcontroller & Embedded Systems Lab. Specialized simulation softwares like Matlab, Sincal, FLUX, PSPICE, PSIM, PSS@E, EMYP etc. are available with the department to carry out experiments and research activities. Besides, faculty of EE department are very actively publishing papers in reputed journals and conferences such as IEEE, IET, Elsevier, Springer, Taylor and Francis, Wiley etc. Moreover, faculty member of EE department have received several sponsored research projects from various agencies like SERB-DST, CPRI, REC and State Council of Science Technology & Environment (SCSTE, Govt. of Meghalaya).

Department of Mechanical Engineering (ME)

The Department of Mechanical Engineering was started from the session July 2013. The department is offering 4-years (8 semesters) B.Tech Programme in Mechanical Engineering with an intake capacity of 30. From the year 2014, the department has started the PhD programme in the area of Design & Manufacturing in Mechanical Engineering, Application of Soft Computing Techniques in Machining, Computational Fluid Dynamics, Turbulence Modeling, Fluid Mechanics etc. From the session July 2015, the department has started the M.Tech programme in the field of “Fluids and Thermal Engineering”, with an intake capacity of 15. Beside this, the department is offering the common courses for the 1st year students in Engineering Mechanics, Basic Thermodynamics and Workshop Practice. The main objective of the department is to cater to the students with class tutorial and hand on practice with state-of-the-art laboratories & workshop. Our aim is to provide the students with perfect principles and practice in mechanical engineering, which would help them to serve the society and address a variety of needs. Another, objective of the department is to come up with courses containing interdisciplinary concepts keeping in view of the advancement of today’s world in the field of robotics, mechatronics, nanotechnology etc.

Department of Civil Engineering (CE)

The department of Civil Engineering has been in existence since July 2012. With an intake capacity of 30 students, the department offers four years (eight semesters) B. Tech programme in Civil Engineering Discipline. The department has initiated its Ph.D. programme since 2014, in various areas of Civil Engineering viz., Environmental Engineering, Structural Engineering, Water Resources Engineering and Geotechnical Engineering. Since July 2018 onwards, the department has been offering a two years (four semesters) M. Tech programme in Structural Engineering. The department is offering a common course for 1st year students on Engineering Drawing.

Additionally, the department actively encourages curriculum development activities by creation of new courses and up-gradation of existing courses. The department undertakes consultancy works in various related areas of civil engineering, to provide knowledge and intellectual inputs to the industry and other organizations and also organizes seminars/symposia for professional interaction. The department also aims to contribute to interdisciplinary academic and research activities of NIT Meghalaya.

Department of Physics

The department of Physics, NIT Meghalaya was established in 2012. The department has actively imparted education to the students of B.Tech 1st and 2nd years in theoretical aspects of various areas along with related experiments to provide greater understanding of the subjects that would help to become better engineers. The PhD programme in the Department is successfully running in the domain of Material Science with special emphasis on Liquid Crystals, Metal Oxide semiconductors, Semiconductors nanostructure and devices and sensors. The Department started its M.Sc. programme from 2015-2016 session with special emphasis on the applied aspects of Physics.

Department of Chemistry

The department of Chemistry, National Institute of Technology Meghalaya was established in 2012. It imparts courses of Chemistry to the B.Tech. 1st and 2nd year students and also offers its M.Sc. programme. The M.Sc. programme was started in the year 2015 with all the major areas of Chemistry such as Inorganic, Organic, Physical, and Quantum Chemistry. Currently, it is offering PhD programs in broad area of chemical Sciences like Organic Chemistry, Inorganic Chemistry, Biophysical Chemistry, Materials Chemistry and Computational Chemistry.

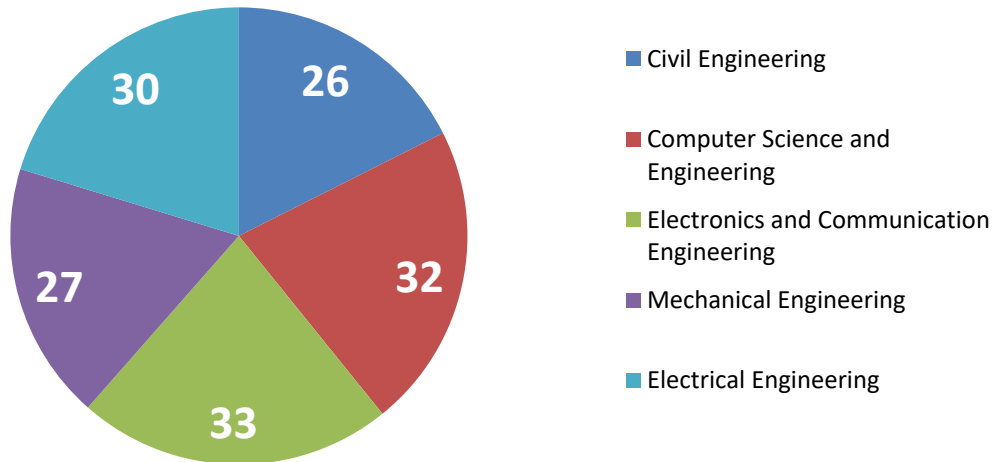
Department of Mathematics

The department of Mathematics started functioning in June 2012. Currently the department offers 2-year M.Sc. and PhD programmes. In addition, the department plays an important role as a supporting department to various B.Tech and M.Tech programmes of the institute.

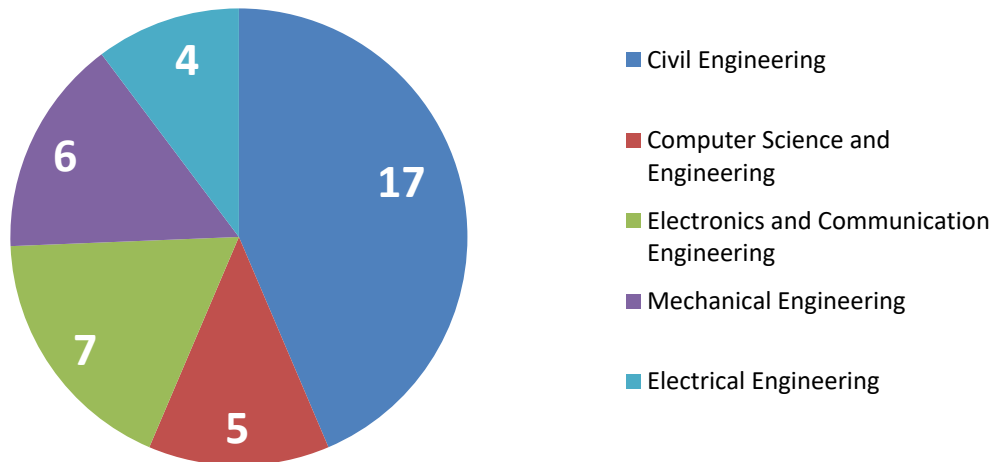
The main objective of the department is to attract students of science and engineering, and to provide for them academically coherent programmes, with courses that range from the fundamental to the advanced. Also to provide students with friendly pastoral and academic support which will help them develop their capabilities in an environment where both independent study and interaction with staff and fellow students are encouraged.

Academic Demographics

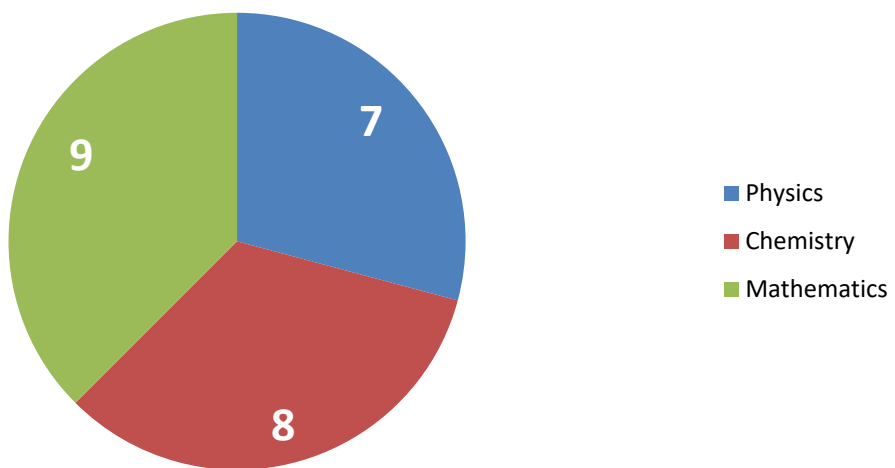
B. Tech Students



M. Tech Students



M. Sc. Students



Central Facilities

- **STATE-OF-THE-ART CLASSROOMS**

The Institute has modern classrooms equipped with LCD projectors and Interactive Electronic Boards with well- furnished sitting arrangement for better teacher-student interaction.

- **CENTRAL LIBRARY**

The Central Library, which is the heart of the Institute, was established in 2012. It serves as a creative and innovative partner in supporting the Institute's teaching, learning, and research activities. The Library holds the knowledge resources predominantly related to Science and Technology, Humanities, Management & other allied subjects. The Library is computerized with an integrated system connected to the Campus Network, providing an e-resources facility to the institutional community. The entire Library collections, including the online databases, are made available through Institute's network. The users can also search Library collections through Web OPAC. It has a collection of around 15,000 + text and reference books. In addition to this, book bank facilities are available for the SC/ST category of students. The Library is a regular subscriber of full-text databases such as ScienceDirect, Springer-Link, ACM Digital Library IEL (GP), ASCE, ASME, and one e-bibliographic database, i.e., MathSciNet. The Library also has around 5977 e-books on famous publishers such as Pearson, Wiley, Elsevier, and Springer Nature to cater to the students' growing information needs. To enable the user community to access the various e-resources remotely in one platform, the Library has subscribed to the KNIMBUS Remote Access tool. The students, faculty members, and research scholars can access all the e-resources subscribed by the Library and the open access e-resources through this platform.

- **COMPUTER CENTRE**

Computer Center is an important part of NIT Meghalaya. It caters to all the departments, centers and sections from internet to computing resources for research activities, training, workshops and daily activities.

Various facilities provided by the center:

- Networking
- Internet service
- Wireless facility
- Various software for specialized research and general use by the campus.
- Computer laboratory

Campus wide networking is comprised of high bandwidth fiber optic backbone that connects all the corners of the institute. The college data network is also extended to the hostels through the fiber optic backbone under contract with the SSNET.com.

The internet line is connected with 1Gbps provided by NKN (National Knowledge Network) a multi gigabit pan-India network for providing unified high-speed network backbone for all knowledge institutions commissioned by MHRD and a backup line from BSNL.

Students, staffs, faculties and guest can connect with desktops, laptops, mobile phones to a wireless access point. Power over Ethernet access points are installed on most of the important junctions like library, classrooms and hallways. Standard features like captive portal are set up to limit guest access and also manage users within the Wi-Fi network without compromising network security. Wi-Fi hut is also present to enable students to do their research and academic activities in natural surroundings

- **LANGUAGE LABORATORY**

The Institute is equipped with a state-of-the-art Language Laboratory to train the students in communication skills. The campus language lab is a centre for language study, conversation and interaction among those interested in improvising their oral communication skills. It has a large variety of programs on pronunciation guidelines, phonetics, linguistic rhythm, intonation, grammar, conversation skills etc. The facility provides access to installed and portable equipment used with audio, video and multimedia language learning tools

- **DESIGN INNOVATION CENTRE**

Design Innovation Center is conceptualized to promote, nurture and advance the culture of design innovation in the country leading to significant contributions and breakthroughs impacting quality of human life. Design-focused innovation & creativity, culture of innovation & creative problem solving, knowledge sharing and collaboration among stake holders. Classroom projects to market/people, Academia-industry interaction & Academia-social interaction. Culture of innovation and creative problem solving, knowledge sharing among stake holders Academia-social interaction Academia-industry interaction.

- **CENTRE FOR TECHNOLOGY ENABLED LEARNING**

A state-of-the-art studio has been set up in the centre where facilities for both content creation and content distribution are being provided. Faculty members of the Institute as well eminent experts from other institutions and organizations are being approached to develop technically high-quality video contents, which will be made available to the students through on-line streaming technology. Through this studio, faculty members of NIT Meghalaya and also neighboring Institutes can participate in developing contents and directly assist in national initiatives like NPTEL and SWAYAM.

- **CENTER FOR INTERNATIONAL RELATION**

This Centre aims to support and promote international education and research as NIT Meghalaya. The Center encourages students of NIT Meghalaya for exchange program through

foreign visit and foreign internship. The centre encourages students of NIT Meghalaya for exchange program through foreign internship. The centre also takes care of admission of foreign students in various programs at NIT Meghalaya through Study in India, ICCR, DASA etc.

- **CENTRE ROBOTICS AND MECHATRONICS**

The aim of the Centre is to bring researches from various field of engineering to enhance and enrich the collaborative research, which can be directly useful to the Industrial automation with the help of cutting edge technology. The centre has developed state of the art facilities for supporting student projects and advance research activities. The Centre has already organized three workshops along with hand on practice to disseminate knowledge among the upcoming research community.

Student Life

- **HOSTEL LIFE**

The life in the hostels of NIT Meghalaya is a multi-faceted community life where the students live together as a family. They live together, study together and enjoy together in a cordial environment. The hostel life helps in incorporating team spirit and a sense of unity. It is like all the cultures of India are coming together under one roof and all the major cultural festivals of the country are celebrated with pomp and gaiety.

- **SPORTS ACTIVITIES**

The major sports activities include the outdoor games of Football, Cricket, Basketball, etc. and indoor games of Badminton, Table Tennis, LAN Gaming, Carrom, and Chess.

- **ANNUAL SPORTS, CULTURAL AND TECHNICAL FESTIVALS**

The student activities of NIT Meghalaya are not just confined to classrooms, laboratories and internship destinations. For the all-round development of its students the calendar of the Institute has been designed to provide for Sports Activities, Cultural and Technical Festivals every year.

- **CULTURAL ACTIVITIES**

The cultural activity showcases the rich cultural heritage of India through the performing arts of Drama, Singing and Dancing. There are also Art and Photography Exhibition, Quiz Events and Fashion Events to portray various aspects of Indian Culture.

COGNITIA

The Annual Technical Festival of **NIT Meghalaya** is named as COGNITIA. It is organised by a group of young technology graduates under the supervision of the well-qualified faculty members of the Institute. It boasts of translating the knowledge imparted in classrooms into action. The festival is a celebration of engineering and science where the students explore their creative limits. Here they design, compete, make mistakes and most importantly, learn from their mistakes to re-think, re-invent and re-engineer various complex solutions for the future.

SHISHIR

Annual cultural festival of **NIT Meghalaya**

- 'SHISHIR' is the Annual Cultural Fest of the National Institute of Technology Meghalaya. It patronises the sense of art and culture among the students of the Institute. The spirit of this festival is to sensitise, appreciate and uphold the rich cultural diversity of the country. The festival is a kaleidoscope of a large number of cross cultural events performed by the students along with eminent guests invited from time to time.

Centre for Career Development

The Centre for Career Development is an integral part of National Institute of Technology Meghalaya (NIT Meghalaya). The objective of the Centre is to make each and every student of NIT Meghalaya a success story and to impart legendary leadership qualities to all the students. It not only ensures that the graduation outcome of the student is a fruitful and upright one, but also ensures that the students develop into a complete human being with the perfect combination of professional and business ethics while still maintaining the values within themselves. The Centre is privileged to generate manpower resources for both the domestic and global economic growth engine over the years by functioning as a vital bridge between the students of the institute and the industries. To meet both the career aspirations of the students and the expectations of the corporate world, the Centre carries out the following functions:

1. Final Placement of the final year students of all the programmes viz. B.Tech, M.Tech, M.Sc. and research scholars in domestic and international corporate houses of repute.
2. Internship of the 2nd, 4th and 6th semester students of the various programmes.
3. Conducting employability enhancement programmes and workshops.
4. Conducting career counseling programmes and workshops.

The Institute has all the state-of-the-art facilities to facilitate the campus hiring activities of the companies. It has a well-furnished hall for pre-placement talks (named the Rendezvous) with a capacity of 100 persons; a well-furnished group discussion room (named the Oval) to hold group discussion for a group of 12 persons with 3 moderators; and 3 interview rooms (named Conclave, Pavilion-1 and Pavilion-2). Additionally, the hall has 30 computers with thin client servers to conduct online tests in the pre-placement talk's venue itself. The Centre also utilizes the Conference Hall of the Institute for carrying out video-conferencing and the Computer Centre when the need arises.

Infrastructure of the Centre for Career Development

- **Rendezvous**
The Rendezvous is the hall of first rendezvous between the recruiters and the potential recruits. Its capacity is 100 wherein pre-placement talks take place.
- **Oval**
The Oval is the room for conducting group discussions. It can hold a group of 12 persons with 3 moderators.
- **Conclave**
The Conclave is the main Interview room for the Centre for Career Development.
- **Pavilion-1 and Pavilion-2**
The Pavilion-1 and Pavilion-2 are the subsidiary interview rooms for parallel interviews.

Student Upskilling Programs

In a bid to improve the soft skill sets (viz. communication, managerial, team working, leadership, etc.) required for working in the industry, the Center for Career Development conducts **Employability Skills Training** with the generous support of the TEQIP III Scheme of the Ministry of HRD, Government of India as finishing course covering verbal/quantitative aptitude, logical reasoning, GD, PI, resume writing etc. **Employability Assessment Tests** are conducted before and after the Employability Skills Training as an employability checkup and based on the comprehensive report, efforts are made to improve the overall student employability. Furthermore, to make the employability opportunities easily accessible to the students, the centre has integrated the institute portal with the National Career Service Portal under Ministry of Labour and Employment, creating a common database and availability of career related information at one place.

Placement Procedure

The Campus Recruitment is scheduled to commence from August 1, 2021 and will continue till May 31, 2022. Until the students are available in the institute due to the current restrictions imposed post the pandemic outbreak, the hiring process will be through different online modes as per the mutual convenience of our esteemed recruiters and students. Recruiters can fix any convenient date within this period. The brief outline of the procedure is given below:

Recruiters contact the Centre for Career

Development for tentative dates for:

- a) Pre-placement Talks
- b) Pre-placement presentations
- c) Written tests, Online Tests, GD and PI

Negotiations and discussions are possible if there is a clash in the dates with other recruiters

Confirmation will be sent to the recruiters after finalization of the dates

Recruiters will be having the following options:

- a) Visit NIT Meghalaya Campus
- b) Schedule their recruitment process in a venue of mutual convenience
- c) Remote Session

Placement Offers to be sent to the selected students with due intimation to the Centre for Career Development.

Will the Company Executives be provided with Accommodation Facilities?

Excellent boarding and lodging shall be provided to the Company's representatives after getting prior information about their arrival.

What Facilities will be available for Recruiters?

- Well-furnished hall for pre-placement talks with a capacity of 100 persons with all state-of-the-art facilities
- Examination Hall for conducting written and analytical tests.
- State-of-the-Art Computer Laboratory for conducting Online Test.
- Well-furnished Group Discussion and Personal Interview room.
- Video Conferencing facilities
- Arrangements for stay in the Guest House/Hotels.
- Local transport facility.

Will the Placement Venue only be NIT Meghalaya Campus?

The Institute invites you for campus interview. The venue can be

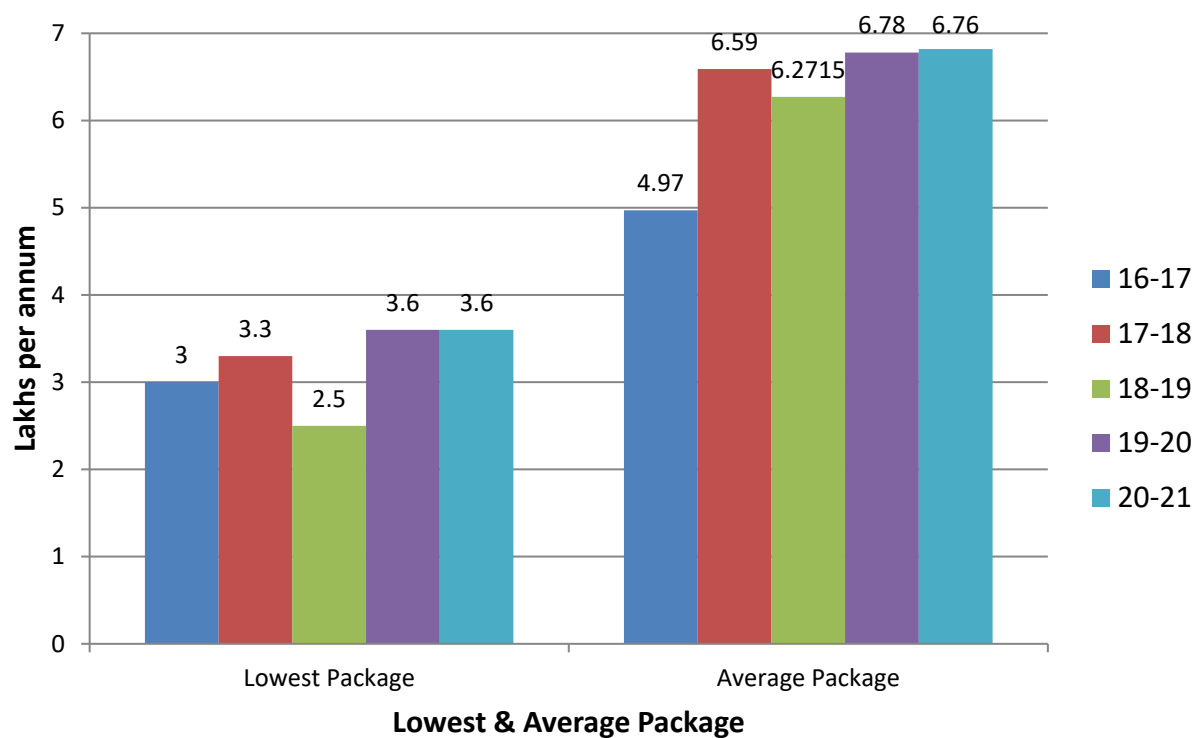
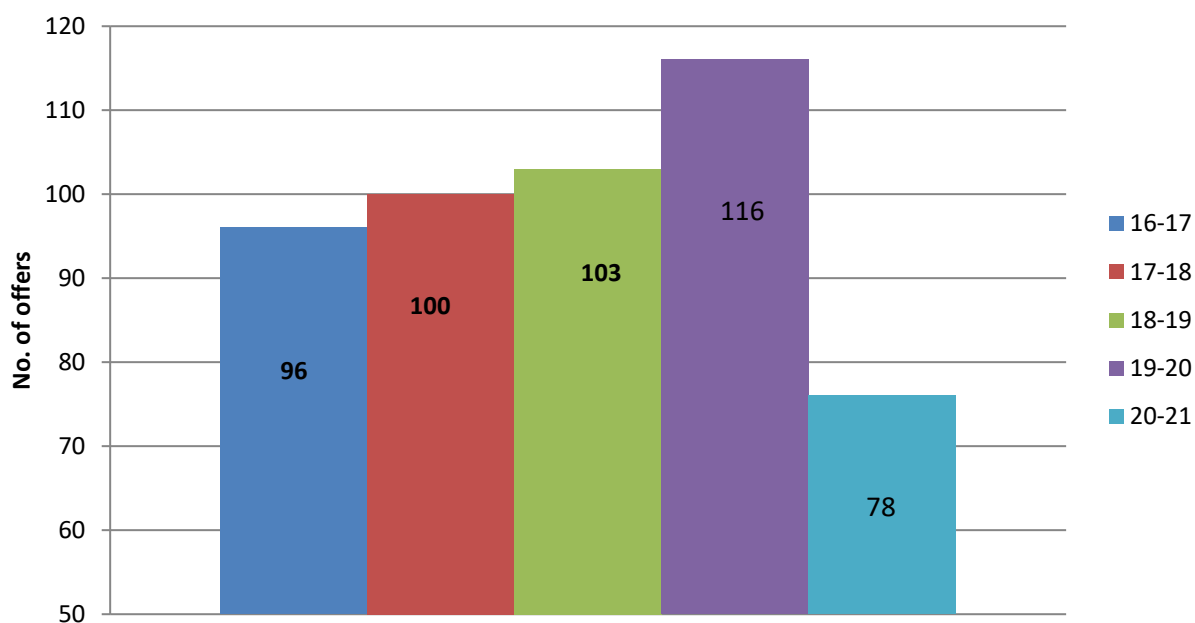
- NIT Meghalaya Campus
- Any other venue of mutual convenience.

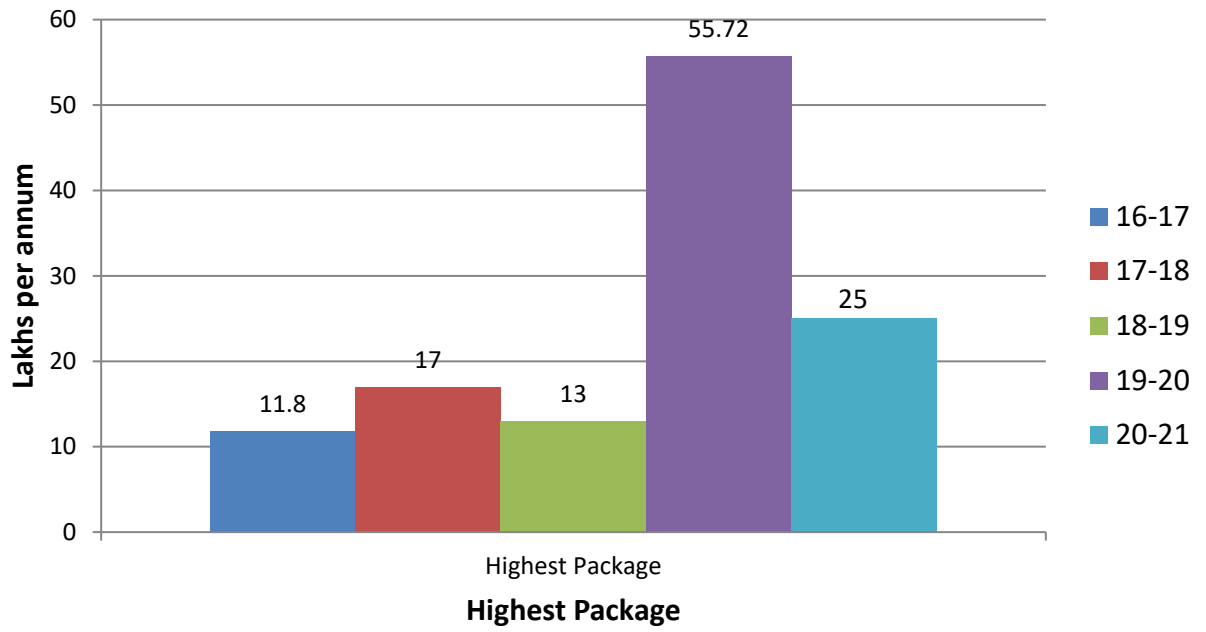
The Institute has been delivering its best to groom technocrats of the future. With the emphasis in Industry Academia Interface for our students, we are confident that our students will prove to be treasured assets for your organization.

Placement Policy

Institute follows 'One Student–One Job' policy. After being offered a job by any company, a student is not allowed to participate further in the placement process. However, a student who has been selected by a company on a CTC (package) 'X', may be allowed to participate in selection process of one additional company offering a CTC package not less than '1.5 X'. A student may get one such additional chance after receiving a job offer. If the student gets job offer from the Dream-Company also, the student will have to leave the previous offer. In case the student is unsuccessful in securing the job offer with the 'Dream-Company'. The student may get another chance for exercising Dream-Company option after 80% of registered students of his/her batch/branch have secured a job offer. Any deviation from this policy under extraordinary circumstances will be dealt on case to case basis.

Placement Record





INTERNSHIPS

NIT Meghalaya lays a strong emphasis in grooming technocrats for the corporate sector of today. Internships are an integral part of the course curriculum to impart real-life work situations and hands on experience to all the students. The Centre for Career Development has successfully provided internship facilities to the students of the Institute over the years to make them industry-ready.

The students of NIT Meghalaya were selected for carrying out internship in the following organisations:

A

Airports Authority of India (AAI) All India Radio
Assam State Electricity Board

B

Bharat Heavy Electricals Limited (BHEL) in Amethi, Bhopal, Haridwar, Jhansi and HERP-Varanasi
Bharat Sanchar Nigam Limited (BSNL) Bihar State Power Holding Company Limited
Biztime
Brigosa Technologies Private Limited BSES Rajdhani Power Limited

C

CDAC
Codespeedy Technology Pvt. Ltd.
CSIR - Central Glass and Ceramics Research

D

Defence Institute of Physiology and Allied Sciences Defence Research and Development Organisation (DRDO) Delhi Transco Limited
Diesel Locomotive Works Doordarshan

E

East Central Railway
Edutech Learning Solutions Private Limited
Essar Steel Limited

G

GlocalEdge

H

HCL Technologies Limited

I

Indian Institute of Information Technology, Kanchipuram (IIIT) Indian Institute of Science (IISc.)
Indian Institute of Technology, Delhi (IIT Delhi) Indian Institute of Technology, Guwahati (IIT Guwahati) Indian Oil Corporation Limited (IOCL) at Barauni

J

Jadavpur University
Jaipur Metro Rail Corporation Limited Jaipur VidyutVitrans Nigam Limited

K

Kite's Technoworld Private Limited Kota Super Thermal Power Station

N**NECTAR**

Narora Atomic Power Station

National Institute of Science and Technology

National Thermal Power Corporation Limited (NTPC) at Anta, Dadri, Kahalgaon, Unchahar, Vindhyanagar

North Eastern Electric Power Corporation Limited (NEEPCO) Nuclear Power Corporation of India Limited

O

Oil and Natural Gas Corporation Limited (ONGC)

ONGC Academy

P

Pinakulo

Power Grid Corporation of India Limited Power System Operation Cooperation Limited

R

Rajasthan VidyutPrasaran Nigam Limited

U

Uttar Pradesh Power Corporation Limited

V

Variable Energy Cyclotron Centre (VECC) Vizag Steel Plant Limited

VERZEO

Our Recruiters



TATA CONSULTANCY SERVICES



The Team

Head, Centre for Career Development

Dr. RajatSubhra Das
E: placement@nitm.ac.in
M: +91 9402102380

Placement Assistant

Mr. Neeloybrata Das
E: joydaz123@gmail.com
M: +91 9774419614

Student Coordinators

NAME	DEPARTMENT	EMAIL-ID	PHONE NUMBER
Adduri Sai Dinesh	ME	b18me018@nitm.ac.in	9573058675
Mansi Sharma	ME	b18me021@nitm.ac.in	9366394696
Jayottam Bhattacharjee	EEE	b18ee006@nitm.ac.in	8794353509
Tanmay Tyagi	EEE	b18ee007@nitm.ac.in	9315525619
Atul Kumar	EEE	b18ee019@nitm.ac.in	9366312464
L sasi kumar	CE	b18ce023@nitm.ac.in	6309331921
Mederametla Naveen	CE	b18ce030@nitm.ac.in	9640030146
Kirla Durga Sarath Chandra	CSE	b18cs025@nitm.ac.in	6303690274
Srikakulapu Samuel Raj	CSE	b18cs028@nitm.ac.in	9502447557
Yash Agarwal	CSE	b18cs013@nitm.ac.in	8787510534
Preeti Polai	ECE	b18ec003@nitm.ac.in	6370113079
J.Vishnu Vardhan	ECE	b18ec011@nitm.ac.in	9515648722
Prem Kumar Vakiti	ECE	b18ec014@nitm.ac.in	8688741815
Riya Das Choudhury	ECE	b18ec036@nitm.ac.in	7005040902

Advantage of NIT Meghalaya



Location



How to Reach Us

- **Air**

To reach Shillong by air one will have to take a flight to LokapriyaGopinathBordoloi International Airport, Guwahati, Assam. From there one can reach Shillong in three hours in a hired Taxi.

- **Train**

The nearest railway station is Guwahati Railway Station. From the railway station, one can travel by shared taxi to Shillong. It takes about 3 hours to reach Shillong.

- **Bus**

After reaching Shillong, one can hire local taxi to reach the campus at Bijni Complex, Laitumkhrah.

Places to Visit

- **Shillong Peak**

A popular stop just a few kilometers out of town, Shillong Peak – the town’s highest point – provides an expansive look at the capital with hills as the backdrop. The area is administered by the IAF and you’ll need to hand in identification at the entrance. You’ll want to carry a good camera to take photos as the air can get hazy. However, there’s a telescope installed to get close-up views of the town. Take time to look around and have a cup of piping hot tea from the local vendors.

Ideal for: Leisure, hiking

- **Laitlum**

Deep gorges and majestic hills rising in the distance await at Laitlum. You can spend hours exploring the meadows or just sitting down on the grass and admiring nature’s handiwork. Although tucked away from town, it’s no longer unfrequented and has become one of the most popular tourist places near Shillong. If you’re up for some pulse-racing adventure, head down the 3,000 or so steps towards the hamlet of Raslong. Seeing the residents effortlessly climb up and down the steep, meandering steps will leave you stunned and more than a little envious!

Ideal for: Leisure

- **Sacred Grove**

A ways from the town in Mawphlang is an oasis of sorts with old trees and meadows creating an Eden-like world. The Sacred Grove is a protected forest overseen by a local deity. You can visit and admire the native flora and fauna but you aren’t allowed to remove anything from here – this goes for leaves, stones, twigs et al.

The Sacred Grove has for long been one of the best places to visit near Shillong especially for those who love nature walks. Local guides will take you in and narrate fascinating tales of lore.

Ideal for: Leisure, history

- **David Scott trail**

One of the most popular places around Shillong for hiking enthusiasts, the David Scott trail is a 16-kilometer hiking route that starts from Mawphlang and ends at Lad Mawphlang in Sohra. The walk is easy although beginner hikers may find it a tad long. The trail winds around hills and crosses streams dotted with rocks. Pack a picnic as there are many scenic spots along the way.

Idea for: Hiking

- **Kyllang Rock**

About 50 kilometers from Shillong and around 10 kilometers from Mairang in West Khasi Hills district is a huge granite rock formation that is a treat to climb (steps are built so you don’t need bouldering skills!). It’s believed that you can’t fall off the top of the rock owing to a magnetic field. However, we advise you not to try it anyway! Once at the top, seat yourself down and feel

the wind refresh you. Take along a good camera for long-distance shots of villages in the distance.

Ideal for: Leisure

- **Nongriat**

Nongriat is arguably one of the hottest tourist places in and around Shillong. Its home to the iconic living root bridges, which are man-made and natural marvels that will take your breath away. The village is accessible by roughly 3,000 steps that wind down from Tyrna. The walk itself is totally satisfying but the reward at the end is what visitors seek. Three living root bridges await, one of which is an impressive double-decker.

Ideal for: Leisure, hiking, overnight stays

- **Mawlynnong**

Asia's cleanest village of Mawlynnong is not just startlingly free of trash but it's incredibly picturesque. Traditional huts and houses dot the village while gardens create a kaleidoscope of colors. However, it's not just cleanliness that it lays claim to; it has a high literacy rate at over 90 percent. The once unknown village is today the beacon of what teamwork and attitude can achieve. Walking through, you see it reflected in almost every aspect of life.

Ideal for: Leisure

- **Nongkhnum**

About three hours from Shillong in West Khasi Hills district headquarters is Meghalaya's largest river island and the second largest after Assam's Majuli. Nongkhnum is one of the best places to visit in and around Shillong although it is quite a ways off. It's located at the divergence of the Kynshi River as it splits into Phan Liang and Namliang. The sandy shores and grassland make for ideal picnic spots so pack a lunch.

- **Nohkalikai Falls**

One of India's highest plunge waterfalls is a feast for the senses especially during the monsoon. Nohkalikai Falls, one of the most visited places near Shillong, plunges into an ultramarine pool hundreds of feet below. Viewing points have been built at several areas so you can see the falls from different heights. Keep in mind that low-level clouds frequently roll in and can obscure the view. **Ideal for:** Leisure

- **Shnongpdeng**

Head towards Jaintia Hills district and beyond the town of Dawki to find a village that is as idyllic as they come. Shnongpdeng is very close to the border with Bangladesh and if you head straight without turning onto the road leading to the village, you'll reach the border crossing point.

Shnongpdeng is an adventurer's mini paradise with camping, hiking and kayaking along the river Umngot some of the activities to indulge in. The village itself is known for its hospitality and there are comfortable homestays where you can spend the night.

Ideal for: Adventure activities, overnight stays